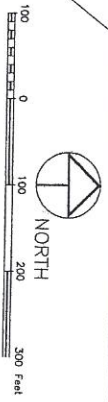
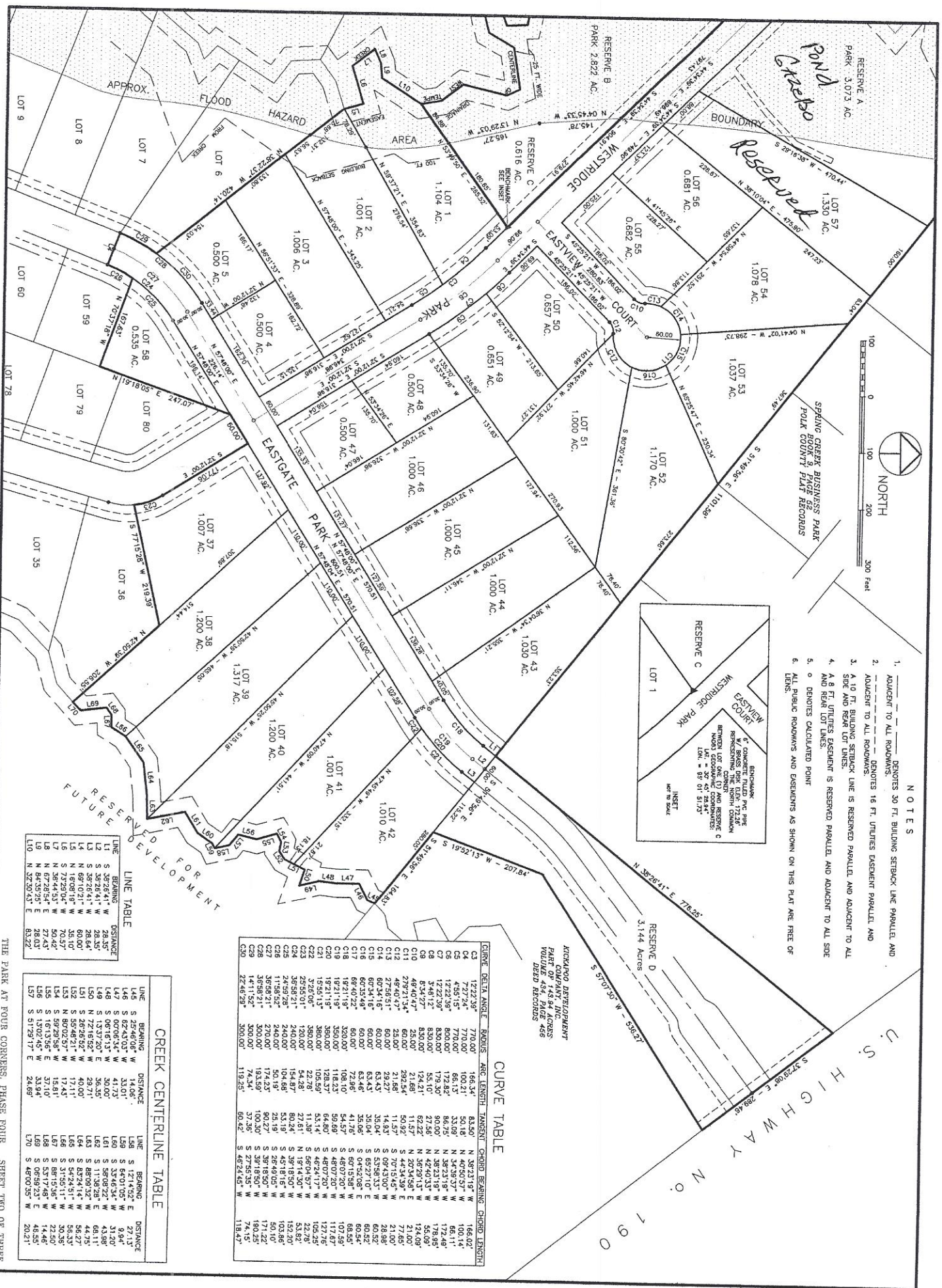
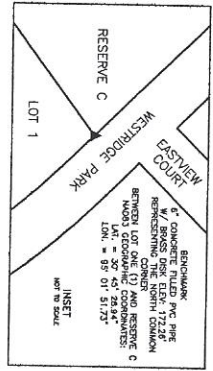


2-12-15



- NOTES**
1. _____ DENOTES 30 FT. BUILDING SETBACK LINE PARALLEL AND ADJACENT TO ALL ROADWAYS.
 2. - - - - - DENOTES 16 FT. UTILITIES EASEMENT PARALLEL AND ADJACENT TO ALL ROADWAYS.
 3. A 10 FT. BUILDING SETBACK LINE IS RESERVED PARALLEL AND ADJACENT TO ALL SIDE AND REAR LOT LINES.
 4. A 6 FT. UTILITIES EASEMENT IS RESERVED PARALLEL AND ADJACENT TO ALL SIDE AND REAR LOT LINES.
 5. ○ DENOTES CALCULATED POINT
 6. ALL PUBLIC ROADWAYS AND EASEMENTS AS SHOWN ON THIS PLAN ARE FREE OF LABELS.



KICKAPOO DEVELOPMENT
 COMPANY, INC.
 PART OF 143.84 ACRES
 VOL. 882, PAGE 496
 REC'D 06/09/08

CURVE TABLE

CURVE	DELTA ANGLE	ADIUS	ARC LENGTH	TANGENT	CHORD BEARING	CHORD LENGTH
C1	122.213°	770.00'	146.34'	80.18'	S 282.813° W	166.02'
C2	7.273°	770.00'	100.21'	33.09'	S 48.015° W	66.11'
C3	4.9515°	800.00'	66.13'	33.09'	S 48.015° W	66.11'
C4	122.213°	800.00'	172.82'	86.75'	N 38.231° W	172.48'
C5	3.4615°	800.00'	179.20'	22.55'	N 42.403° W	178.85'
C6	8.3427°	830.00'	124.21'	61.20'	S 20.343° E	55.03'
C7	27.9213°	25.00'	29.254'	11.57'	S 44.343° E	7.65'
C8	27.9213°	25.00'	29.254'	11.57'	S 44.343° E	7.65'
C9	27.9213°	25.00'	29.254'	11.57'	S 44.343° E	7.65'
C10	27.9213°	25.00'	29.254'	11.57'	S 44.343° E	7.65'
C11	27.9213°	25.00'	29.254'	11.57'	S 44.343° E	7.65'
C12	27.9213°	25.00'	29.254'	11.57'	S 44.343° E	7.65'
C13	27.9213°	25.00'	29.254'	11.57'	S 44.343° E	7.65'
C14	60.3415°	60.00'	63.43'	35.04'	S 67.271° E	60.52'
C15	60.3415°	60.00'	63.43'	35.04'	S 67.271° E	60.52'
C16	60.3415°	60.00'	63.43'	35.04'	S 67.271° E	60.52'
C17	60.3415°	60.00'	63.43'	35.04'	S 67.271° E	60.52'
C18	60.3415°	60.00'	63.43'	35.04'	S 67.271° E	60.52'
C19	18.2118°	350.00'	108.10'	54.57'	S 48.072° W	107.59'
C20	18.2118°	350.00'	108.10'	54.57'	S 48.072° W	107.59'
C21	18.2118°	350.00'	108.10'	54.57'	S 48.072° W	107.59'
C22	18.2118°	350.00'	108.10'	54.57'	S 48.072° W	107.59'
C23	18.2118°	350.00'	108.10'	54.57'	S 48.072° W	107.59'
C24	18.2118°	350.00'	108.10'	54.57'	S 48.072° W	107.59'
C25	18.2118°	350.00'	108.10'	54.57'	S 48.072° W	107.59'
C26	18.2118°	350.00'	108.10'	54.57'	S 48.072° W	107.59'
C27	11.5852°	240.00'	50.19'	25.19'	S 85.405° W	102.86'
C28	11.5852°	240.00'	50.19'	25.19'	S 85.405° W	102.86'
C29	36.9821°	300.00'	174.27'	80.27'	S 39.185° W	171.22'
C30	22.4628°	300.00'	193.59'	100.30'	S 39.185° W	180.25'
C31	22.4628°	300.00'	193.59'	100.30'	S 39.185° W	180.25'
C32	22.4628°	300.00'	193.59'	100.30'	S 39.185° W	180.25'
C33	22.4628°	300.00'	193.59'	100.30'	S 39.185° W	180.25'
C34	22.4628°	300.00'	193.59'	100.30'	S 39.185° W	180.25'
C35	22.4628°	300.00'	193.59'	100.30'	S 39.185° W	180.25'
C36	22.4628°	300.00'	193.59'	100.30'	S 39.185° W	180.25'
C37	22.4628°	300.00'	193.59'	100.30'	S 39.185° W	180.25'
C38	22.4628°	300.00'	193.59'	100.30'	S 39.185° W	180.25'
C39	22.4628°	300.00'	193.59'	100.30'	S 39.185° W	180.25'
C40	22.4628°	300.00'	193.59'	100.30'	S 39.185° W	180.25'

CREEK CENTERLINE TABLE

LINE	BEARING	DISTANCE	BEARING	DISTANCE	
L1	S 82.9641° W	114.06'	L58	S 121.432° E	27.13'
L2	S 82.9641° W	33.01'	L59	S 64.015° W	31.20'
L3	S 82.9641° W	30.00'	L60	S 34.801° W	9.94'
L4	S 82.9641° W	30.00'	L61	S 11.3982° E	6.11'
L5	S 82.9641° W	38.35'	L62	S 11.3982° E	6.11'
L6	S 82.9641° W	28.64'	L63	S 88.0932° W	44.75'
L7	S 82.9641° W	60.00'	L64	S 82.9641° W	58.27'
L8	S 82.9641° W	35.10'	L65	S 54.241° W	55.33'
L9	S 82.9641° W	35.10'	L66	S 54.241° W	55.33'
L10	S 82.9641° W	20.42'	L67	S 81.5738° W	23.25'
L11	S 82.9641° W	27.43'	L68	S 53.1748° W	14.46'
L12	S 82.9641° W	27.43'	L69	S 53.1748° W	14.46'
L13	S 82.9641° W	83.22'	L70	S 49.0035° W	20.21'

THE PARK AT FOUR CORNERS, PHASE FOUR SHEET TWO OF THREE